



## **Leo, Aries & Taurus Foldable Rollators**

### **Owner's Handbook**

**90652 (Med), 90653 (Sml),  
90654 (Med), 90655 (Sml),  
90656 (Med) & 90657 (Sml)**

## Introduction – Leo, Taurus & Aries Foldable Rollators

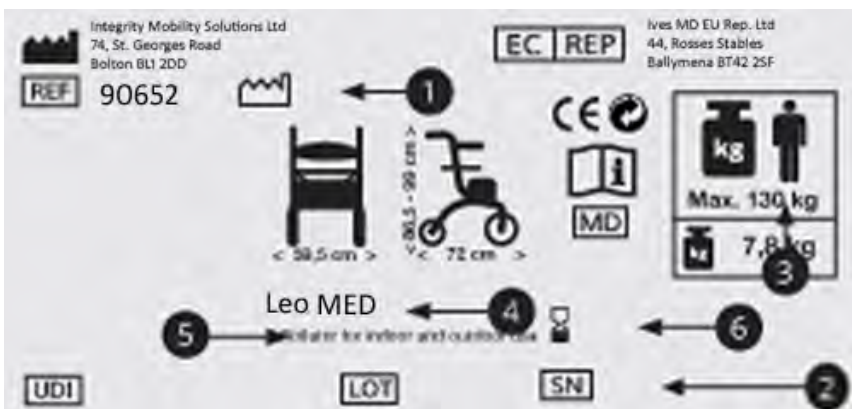
These instructions provide the user and/or carer with information about the safe and efficient use of these products, including cleaning and maintenance, and operation of the product.

Ensure that you fully read these instructions before using this product.

The product can be used as an aid for walking. It comes with an integral seat & backrest as well as a carry bag. The Aries rollator is designed for both indoor and outdoor use (even on rugged terrains), whereas the Leo and Taurus models are designed for mainly indoor use but can also be used outdoors on smooth terrains only.

Below is an example of the label that you will find attached to your rollator, which will help you to identify which model you own. The label also includes some important information as follows:

1. **Date of Manufacture**
2. **Unique Serial Number**
3. **Max. User weight for the unit**
4. **Model name**
5. **Intended use of Rollator**
6. **Expiration Date**



## Parts Description

### Leo Rollator:

1. Push Handles
2. Brake Grips
3. Backrest
4. Handle Adjustment
5. Seat
6. Storage Bag
7. Rear Wheels
8. Front Wheels
9. Stepper



### Aries Rollator:

1. Push Handles
2. Brake Grips
3. Backrest
4. Handle Adjustment
5. Seat
6. Storage Bag
7. Rear Wheels
8. Front Wheels
9. Stepper



### Taurus Rollator:

1. Push Handles
2. Brake Grips
3. Backrest
4. Handle Adjustment
5. Seat
6. Storage Bag
7. Rear Wheels
8. Front Wheels
9. Stepper



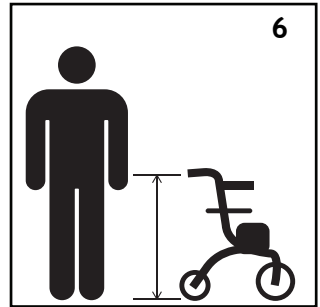
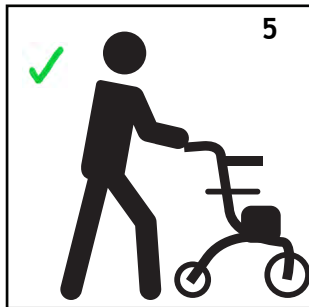
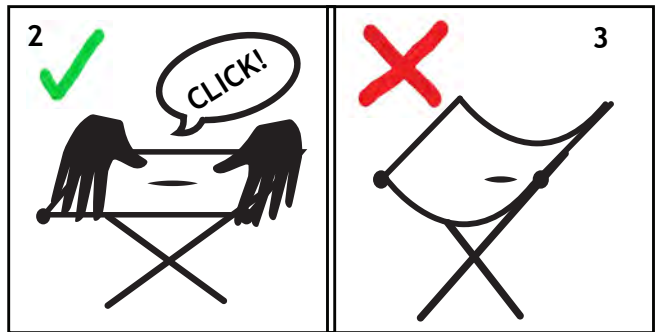
## Use of the Rollator

### Opening & Folding of the Rollator:

Before opening the rollator, you will need to release the catch which is keeping the unit locked. (See Image 1 below) Flick the catch up & over the folded seat. This will now allow you to push the two side bars until the seat is flat & there is an audible "Click" when the seat is locked in the open position. (See Images 2 & 3 below) **DO NOT** use the seat or the rollator if there is no audible "Click" heard.

It is important that the rollator be pushed in the correct fashion. **DO NOT** leave a large gap between yourself & the rollator (See images 4 & 5 below) as this could cause the rollator to leave your grip & a fall occur.

It is important that the rollator handles be set at the correct height for the user. (See Image 6 below.) To determine the correct height, place your arms against your sides & raise the handles to the height of your wrists.



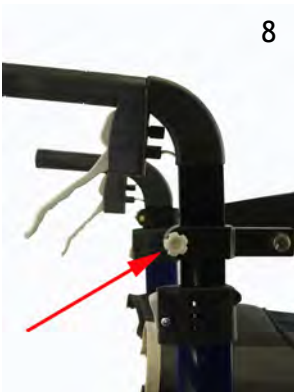
## Adjusting your Rollator:

There are a number of parts on your rollator that can be adjusted as necessary. These adjustments are made as shown below:

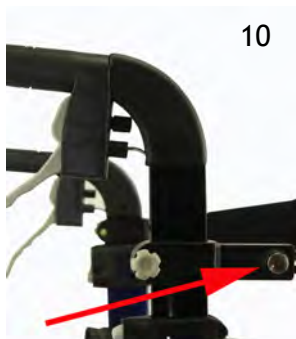
**Push Handles:** The handles can be adjusted in height by pressing the grey button at the front of the handle section & lifting or dropping the handle to the correct height. (See image 7 below.) When the handle is at the height closest to the desired height, you will hear an audible "Click" & the handle will be locked in position.



**Backrest Height Adjustment:** The Backrest is height adjustable to provide added comfort when sitting on the rollator seat. To adjust the Backrest height, locate the grey star button on each side of the frame. (See image 8 below) Rotate the button anti-clockwise to release the backrest & move to the desired height. When the desired height is reached, rotate the grey star button in a clockwise direction until fully locked. (See Image 9 below) Perform the same function on both sides.



**Backrest Length Adjustment:** The Backrest can also be adjusted for length if desired. This can provide extra comfort and additional support to the back for the user. To adjust the Backrest length, locate the silver button just in front of the grey star button shown on the previous page. (See Images 10 & 11 below)



**Removal of Storage Bag:** When folding the rollator it is possible to remove the storage bag if desired, although this is not required for the folding of the rollator. To remove the bag follow these quick & easy steps:

1. If you have a Leo rollator, then the bag can easily slide off of the frame tubes on both sides. (See Images 12 & 13 below)
2. If you have a Taurus or Aries rollator, then you will need to unfasten the Velcro strips before attempting to remove the bag. (See Image 14 below)

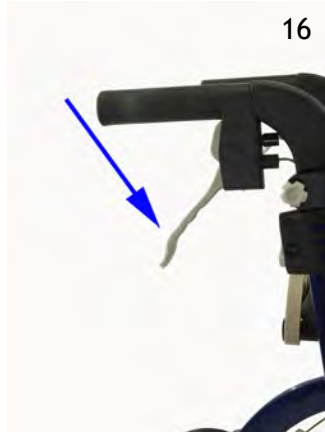


Replacing the bag is the opposite method to the one shown above.

## Using the Brakes:

If you wish to stop the rollator while you are pushing, pull the brake grips up towards the handle gently until the rollator stops. Do not attempt to push the rollator while the brakes are being applied. (See Image 15 below)

If you want to park the rollator, then push the brake grips down until they lock into position. (See Image 16 below)



If you need to rest by sitting on the seat of the rollator, **ALWAYS** make sure that the parking brakes are locked into position. **NEVER** try to push the rollator if the seat is being used. **NEVER** release the parking brakes while the seat is being used.

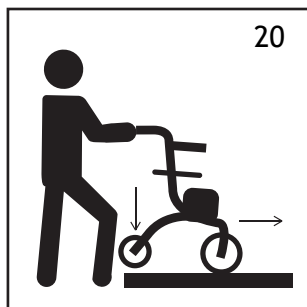
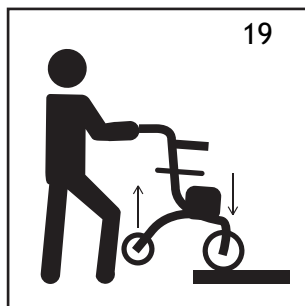
## Kerbstones:

If you need to cross a road and there are no dropped kerbstones available, then there are a few simple steps that you will need to follow:

Going up a kerb:

1. Push the rollator forwards until the front wheels touch the kerb. Gently lift the front wheels using the steppers. (See Image 17 on next page)
2. Push forwards until the front wheels are over the footpath. (See Image 18 on next page)
3. Gently drop the front wheels & raise the rear wheels. (See Image 19 on next page)

4. Gently push the rollator forwards until the rear wheels are over the path & gently drop the rear wheels onto the path. (See Image 20 below)



Going Down A kerb:

Follow these steps:

1. Push the rollator forwards so that the front wheels are over the road.
2. Gently drop the front wheels onto the road.
3. Push the rollator forwards until the rear wheels are over the road.
4. Gently drop the rear wheels until they touch the road surface.
5. Push the rollator forwards until you reach the opposite side of the road.

**NEVER** place any load onto the seat of the rollator when either dropping down a kerb or climbing onto a kerb.



## Technical Specifications:

### Technical specifications of the Integrity Leo

	Size S   Size M
Total length	72 cm   72 cm
Total width	The seat width + 14 cm   The seat width + 14 cm
Total height	86.5 ↔ 77 cm   86.5 ↔ 99 cm (adjustable height push handles)
Total weight	7.5 kg   7.8kg
User weight	Max. 130 kg   Max. 130 kg
Seat width	45 cm   45 cm
Seat depth	22 cm   22 cm
Seat height	54 cm   62 cm

### Technical specifications of the Integrity Taurus

	Size S   Size M
Total length	72cm   72 cm
Total width	The seat width + 16 cm   The seat width + 16 cm
Total height	86.5 ↔ 77 cm   86.5 ↔ 99 cm (adjustable height push handles)
Total weight	7.5 kg   7.8kg
User weight	Max. 130 kg   Max. 130 kg
Seat width	45 cm   45 cm
Seat depth	22 cm   22 cm
Seat height	54 cm   62 cm

### Technical specifications of the Integrity Aries

	Size S   Size M
Total length	76 cm   76 cm
Total width	The seat width + 14 cm   The seat width + 14 cm
Total height	81.5 ↔ 91.5 cm   86.5 ↔ 99 cm (adjustable height push handles)
Total weight	7.8 kg   8.8kg
User weight	Max. 130 kg   Max. 130 kg
Seat width	45 cm   45 cm
Seat depth	22 cm   22 cm
Seat height	59cm   59 cm

## Folding the Rollator:

To fold the rollator there are some simple steps to follow:

1. Place a hand in the strap found on the top of the seat.
2. Pull the strap up, which will automatically start to close the frame.
3. Push the sides together, to meet in the centre.
4. Pull the locking clip over the front of the rollator, to lock the sides together. You will hear an audible "Click" once the locking clip has locked the rollator correctly.

The images 21 - 25 below will show the process step by step.



## Care and Maintenance

Your rollator will need periodic maintenance to keep it working well. The amount of maintenance required will be dependent on the amount of use your rollator gets. There are some parts that will need to be checked for wear on a regular basis.

**Tyres:** The tyres should be checked regularly for wear. If you find excessive wear is starting to show, then replace the tyres ASAP. The Outdoor version has a tread applied to the tyre, which needs to be kept clean and should not be showing signs of excessive wear. If you see that the tread is starting to disappear, then we recommend that you change the tyres ASAP, as this will affect the grip that the tyres can provide.

**Brakes:** When you first receive your new rollator, the brakes will have been calibrated to work efficiently and to provide the best grip possible. However, over time, the brakes can start to work loose or start to wear. If you notice either of these things occurring, then it is time to have the brakes re-calibrated. This can be performed by your local stockist or any qualified engineer.

**Frame:** The frame is the most important part of your rollator and needs to be kept in good condition. Check the frame before each use for the following:

1. Does the frame open & fold easily?
2. Does the rollator run straight or does it try to pull to one side?
3. Has the frame been damaged in any way?
4. Does the seat still "Click" when it is opened fully?

If you see any problems with any of the above, **DO NOT** use the rollator, but take it to be repaired by an authorised dealer / Engineer.

**Wheels:** Always check the wheels before using the rollator. Check that all wheels are free to rotate smoothly. The front wheel forks should also rotate for steering. If they are stiff, then they need to be calibrated. There should not be any wobble in any of the wheels when you push your rollator. If you see any sign of wobble, then your wheel(s) may be starting to come loose and should be checked **immediately**.

**Seat:** The seat should not be showing any signs of wear. If you spot any holes, thinning of the fabric or tears in the seat, then **DO NOT** use the seat. This may not hold your weight & needs to be replaced.

## Cleaning:

Cleaning of your rollator is very important for a long life of the product. **DO NOT** use any abrasive cleaners or cloths on your rollator as these can lessen the lifespan of your rollator. **DO NOT** use a high pressure washer to clean your rollator as this can cause irreversible damage to the rollator.

All parts of the rollator can be cleaned by using a soft cloth & hot soapy water. **Always** make sure that the entire rollator is thoroughly dried before folding & storing. Drying should only be performed using a dry soft cloth.

## **Warranty**

Your product is warranted to be free of defects in materials and workmanship for one year from date of purchase. This device was built to exacting standards and carefully inspected prior to shipment. This warranty is an expression of our confidence in the materials and workmanship of our products and our assurance to the customer.

In the event of a defect covered by this warranty, we will at our option supply parts or replace the device. This warranty does not cover device failure due to owner misuse or negligence, or normal wear and tear. The warranty does not extend to non-durable components, such as rubber **accessories, castors and grips, which are subject to normal wear and need periodic replacement.**

If you have any queries or require full warranty conditions, please contact your supplier.

